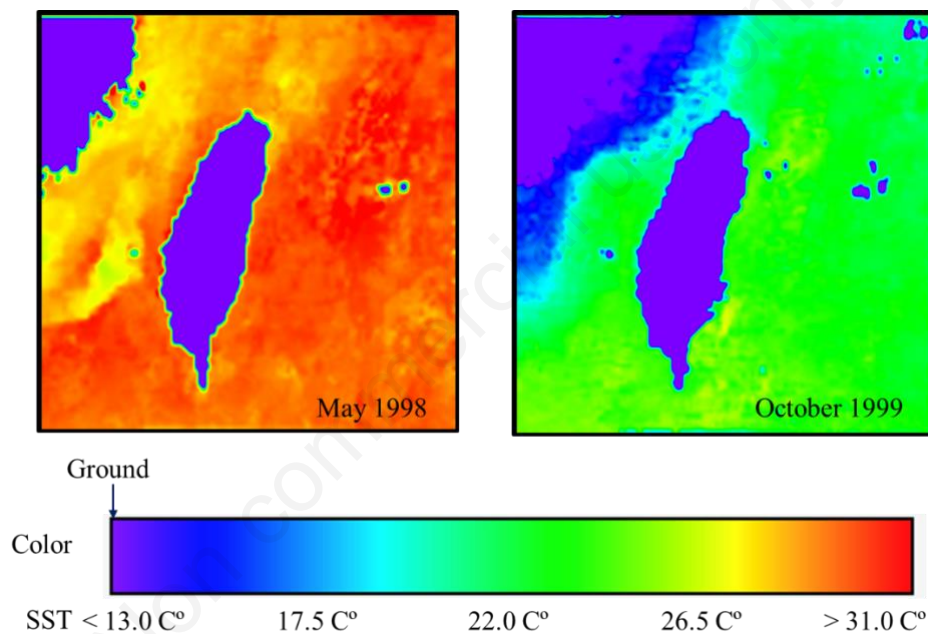


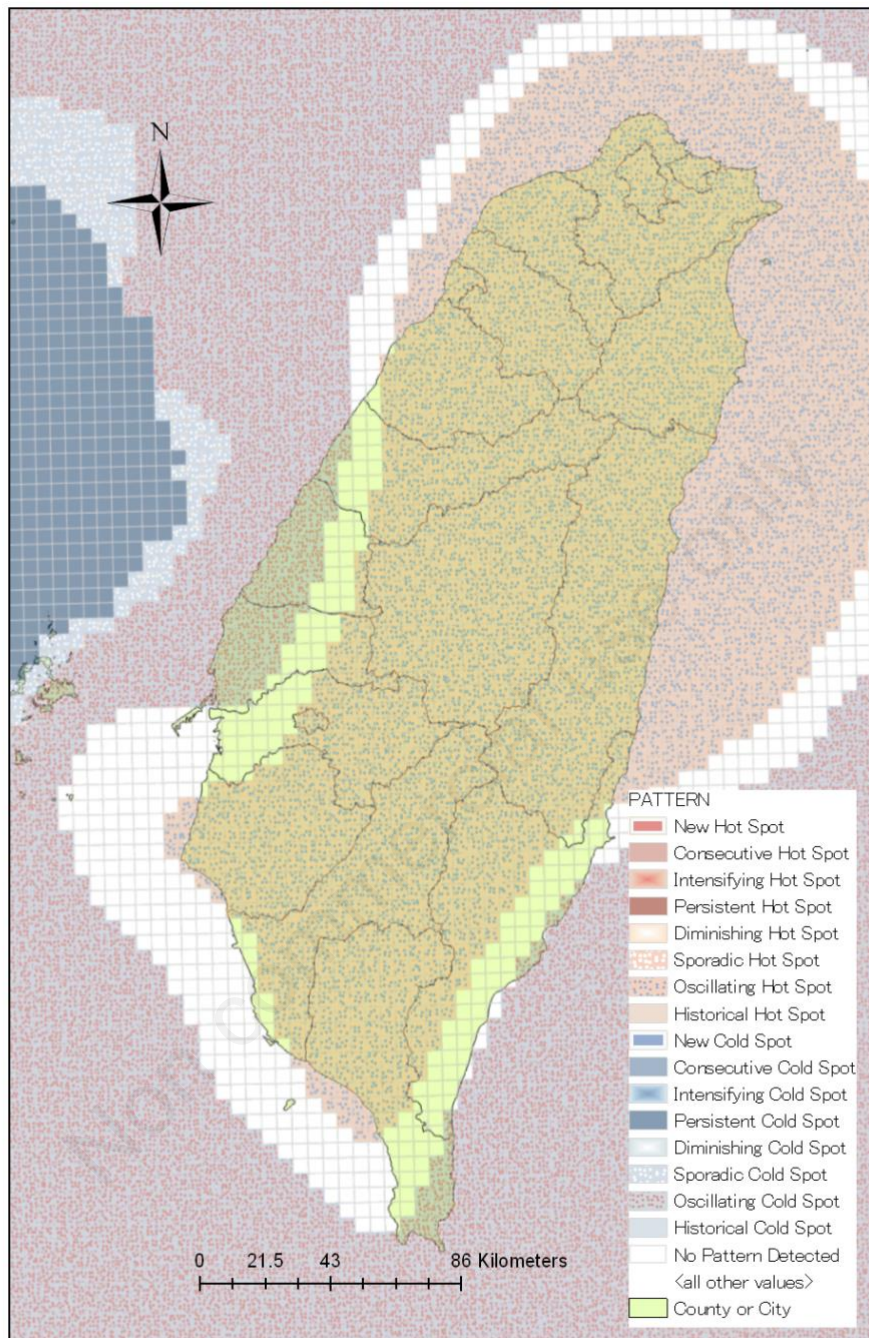
Appendix

Geospatial Health #771

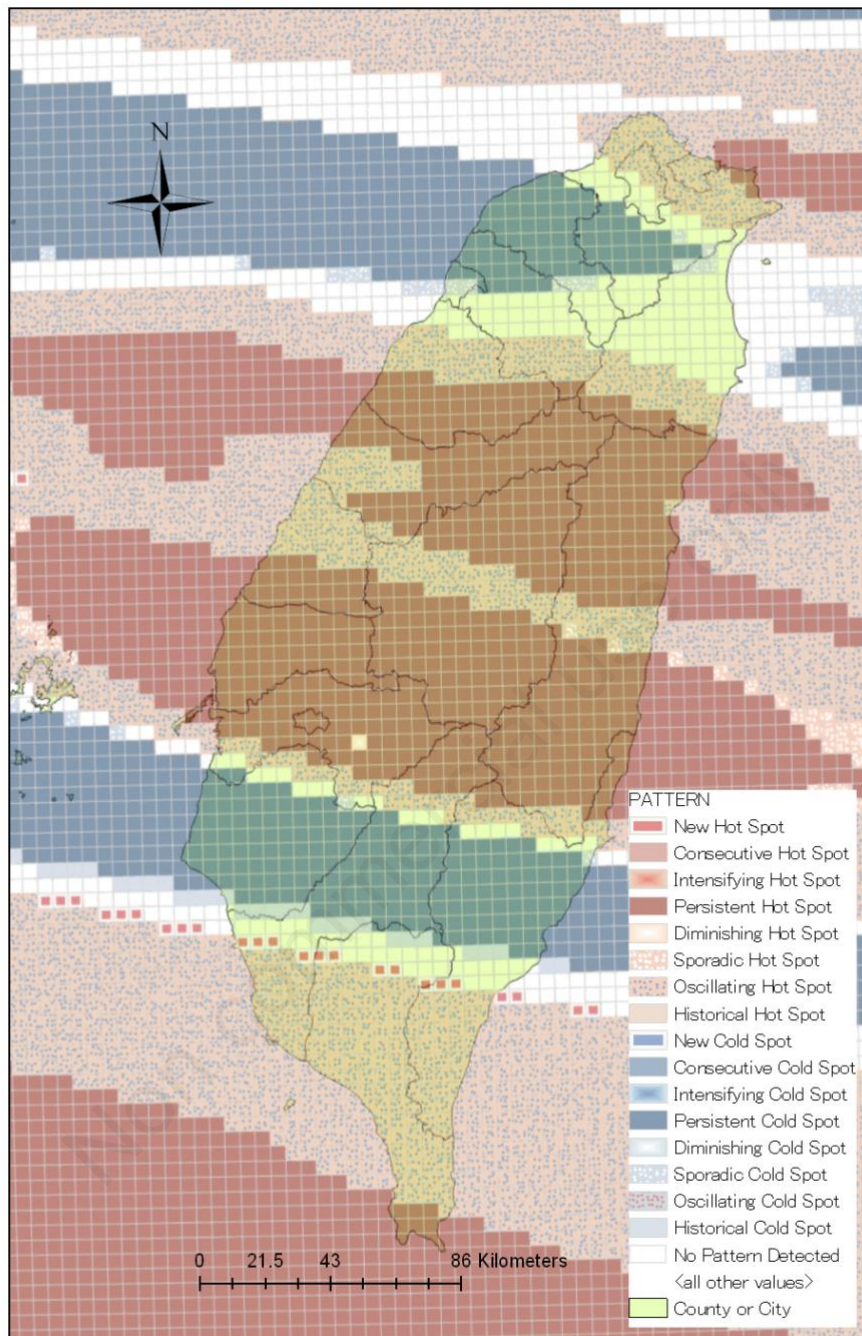
**Spatiotemporal dengue fever hotspots associated with climatic factors in Taiwan including outbreak predictions based on machine-learning**



**Figure A1. Sea surface temperature with pseudo color on May 1998 and October 1999.**



**Figure A2. Spatiotemporal hotspot and cold spot patterns for rainfall.**



**Figure A3. Spatiotemporal hot/cold spot patterns for land surface temperature.**