

Appendix

Geospatial Health #723

Mapping the potential distribution of the schistosomiasis intermediate host

Biomphalaria straminea in China

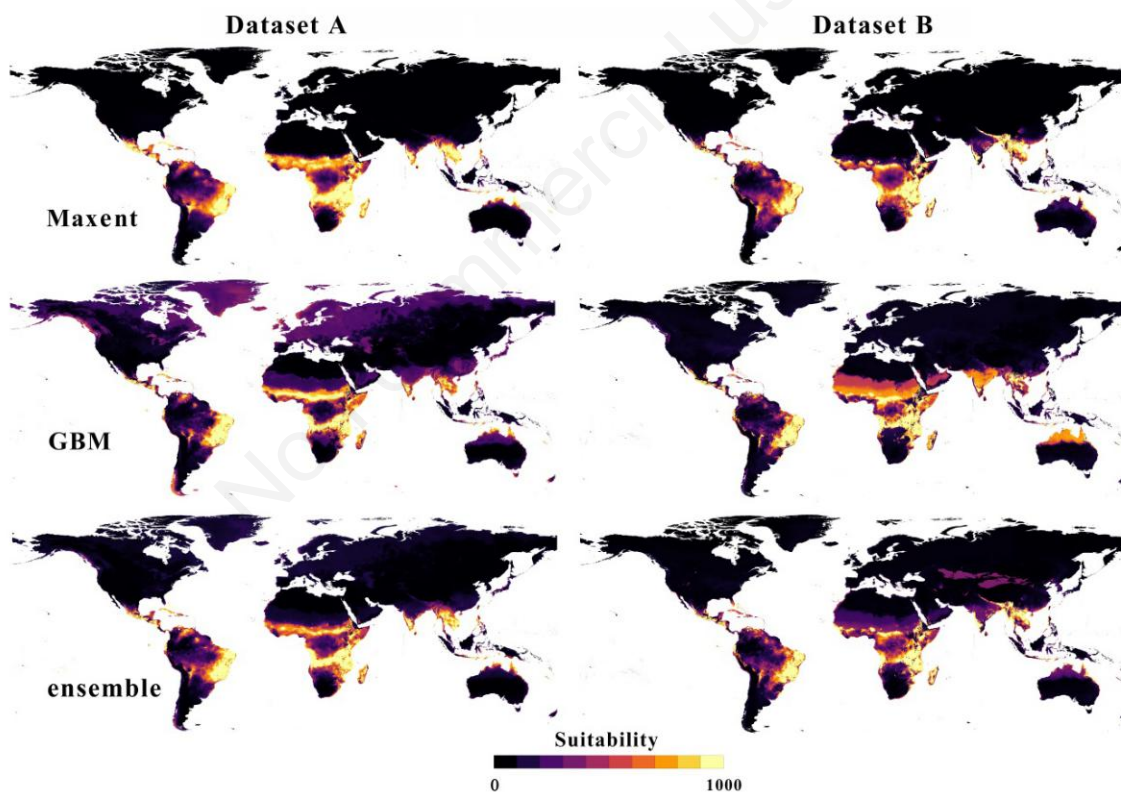


Figure A1. Global transfer of native models of *Biomphalaria straminea* based on three approaches (Maxent, generalized boosted model – GBM – and ensemble).

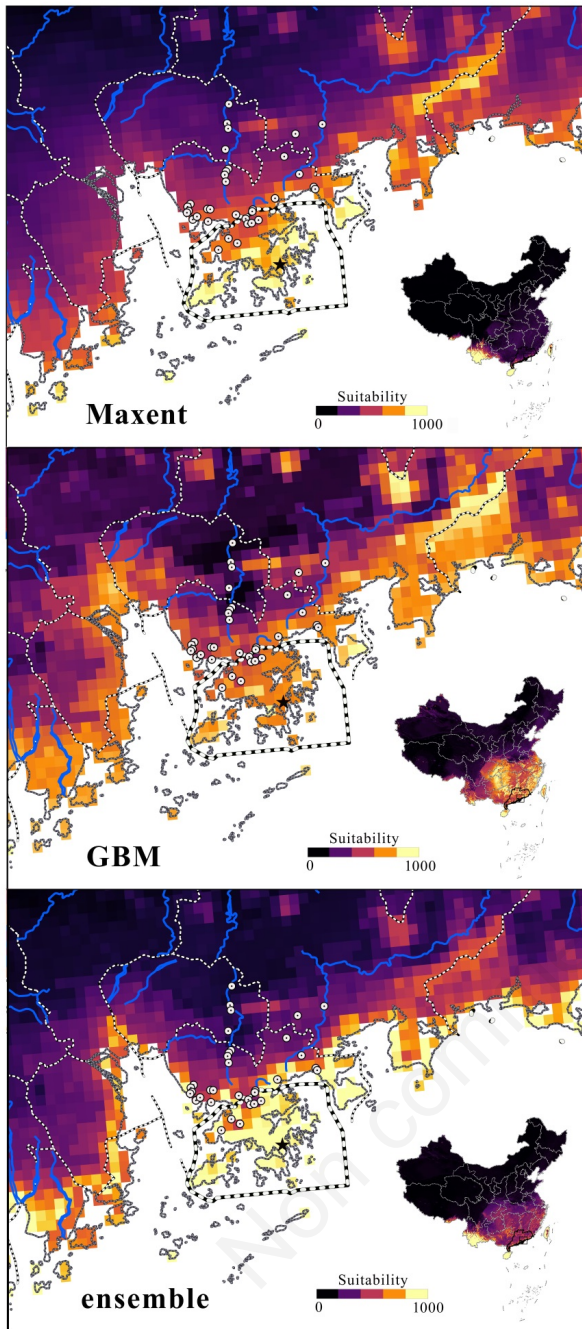


Figure A2. Potential distributions of *Biomphalaria straminea* in southern China. Native models transfers in China were based on three approaches (Maxent, GBM, and ensemble) using dataset A.

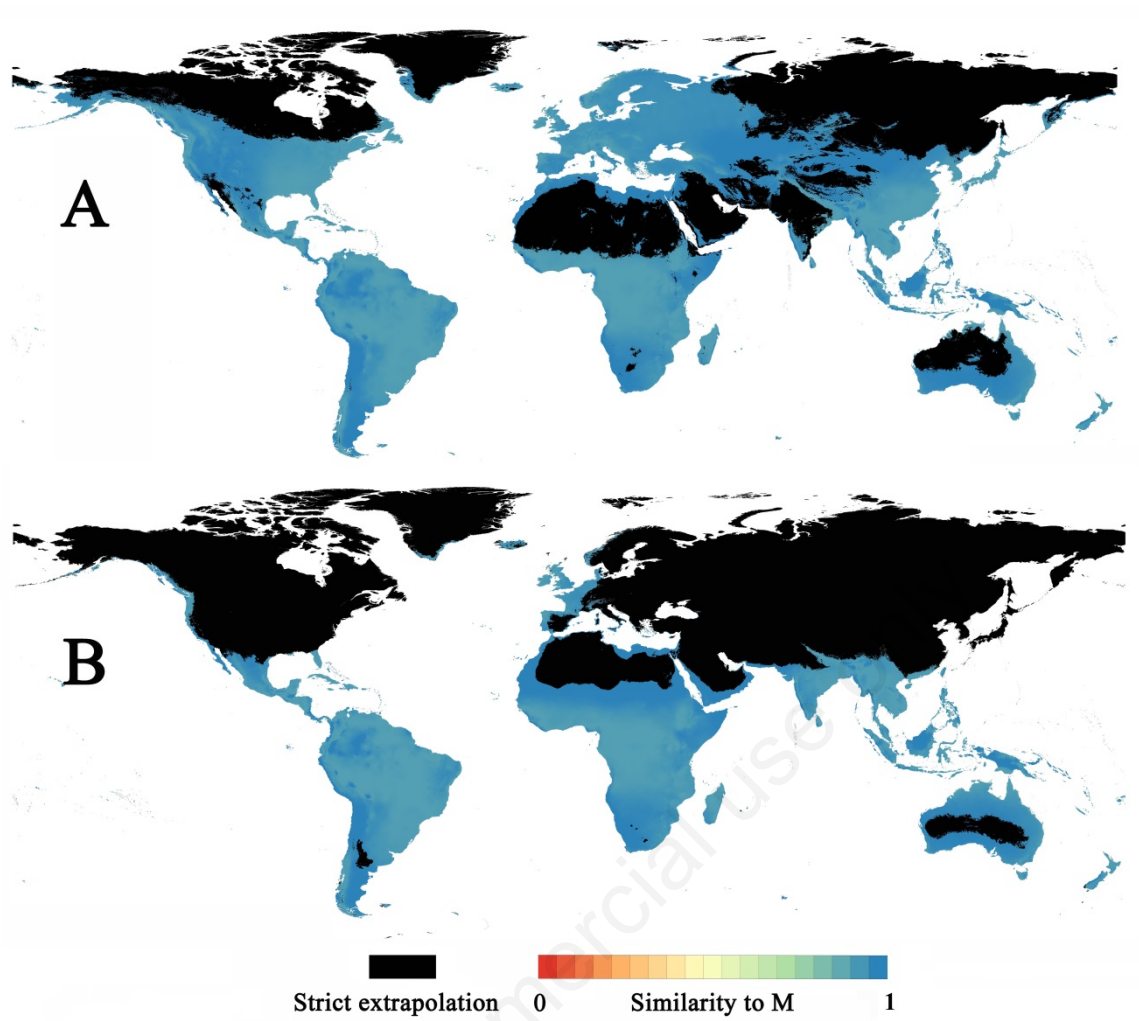


Figure A3. Mobility-oriented parity analyses of climatic similarities between native and global climate spaces based on datasets A and B.