

Appendix - Supplementary materials

Table S1. Test of spatial stationarity - Monto Carlo Test for Spatial Variability (p-value), and DIFF of Criterion., Figure S1: Local estimate significance measure - Local t-value map plots.

Table S1. Test spatial stationarity - Monto Carlo Test for Spatial Variability(p-valve), and DIFF of Criterion.

Variable	p -valve	DIFF of Criterion
Intercept	0.038	-26.595
Sex m	0.740	5.621
Age_group [0 – 21)	0.063	4.667
Age_group2 [21 - 65)	0.059	0.413
FS 1	0.643	5.720
FS 2	0.551	5.213
FS 3	0.076	5.961
HYP_ yes	0.110	5.371
DIAB_ yes	0.439	2.493
AC_ yes	0.741	3.612
Second Wave	0.001	-24.472
Third Wave	0.001	-9.963
Out Waves	0.001	-13.829

The italicized findings showed that the predictors vary spatially. FS, family size ; HYP, hypertension ; DIAB, diabetics; AC, Any comorbidities.

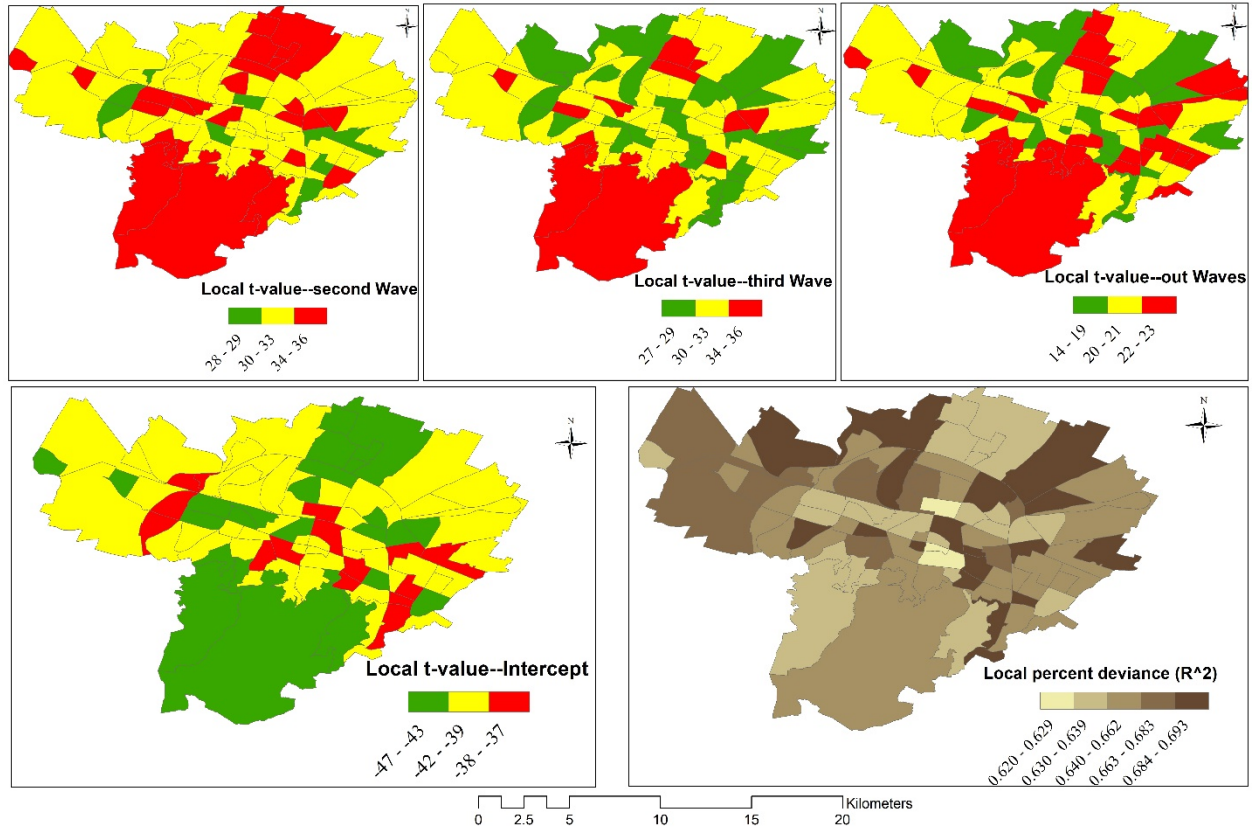


Figure S1. Local estimate significance measure - Local t-value (Secondwave (top left) , Thirdwave (top middle Out Waves(top right), Intercept (bottom left)), and the spatial distribution of local percent deviance(R^2) of GWPR (bottom right).