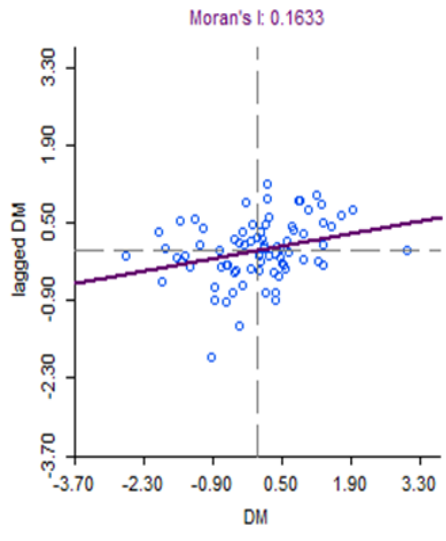
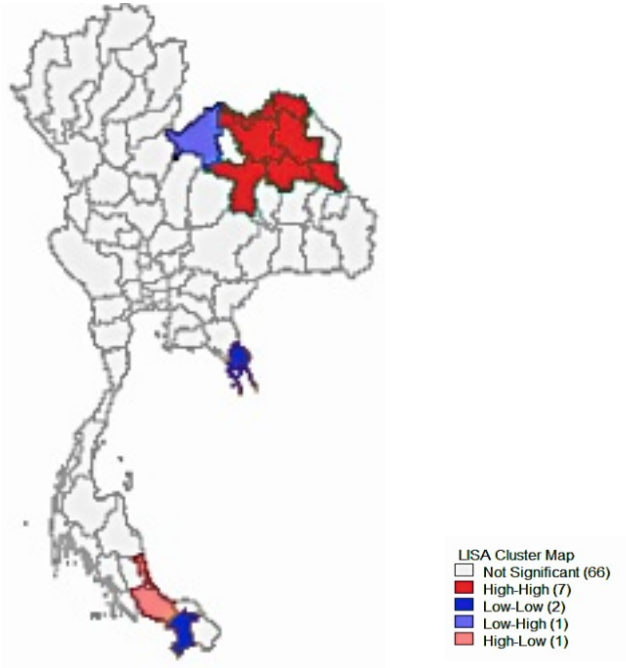


# APPENDIX



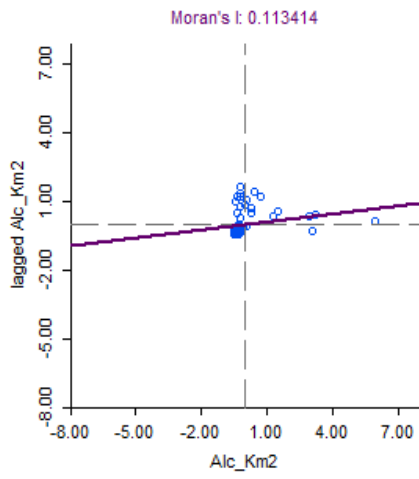
**Figure 1.** Moran's I scatter plot of DM prevalence.



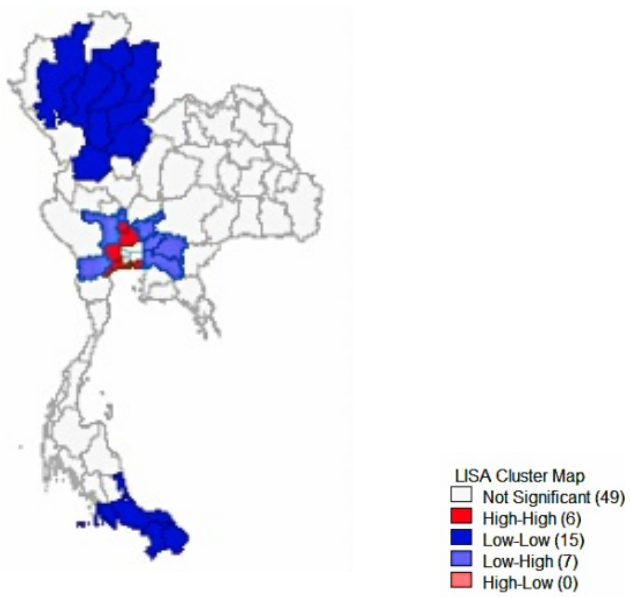
**Figure 2.** LISA (univariate) map of DM prevalence.



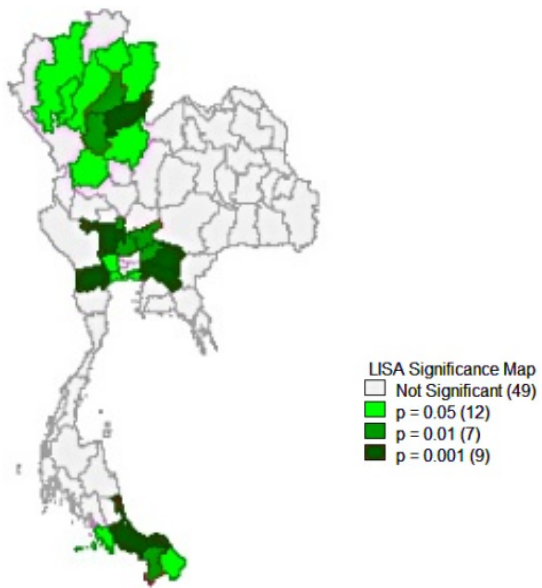
**Figure 3.** Significant (univariate) map of DM prevalence.



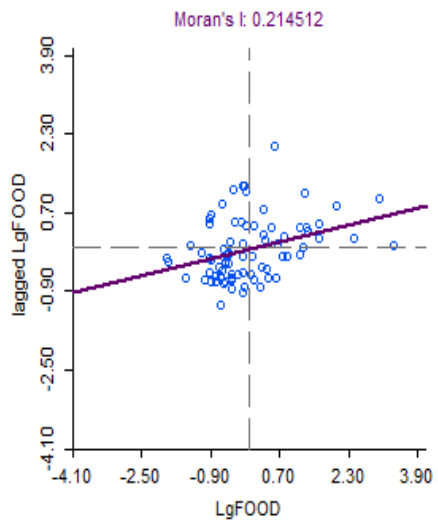
**Figure 4.** Moran's I scatter plot of alcohol stores.



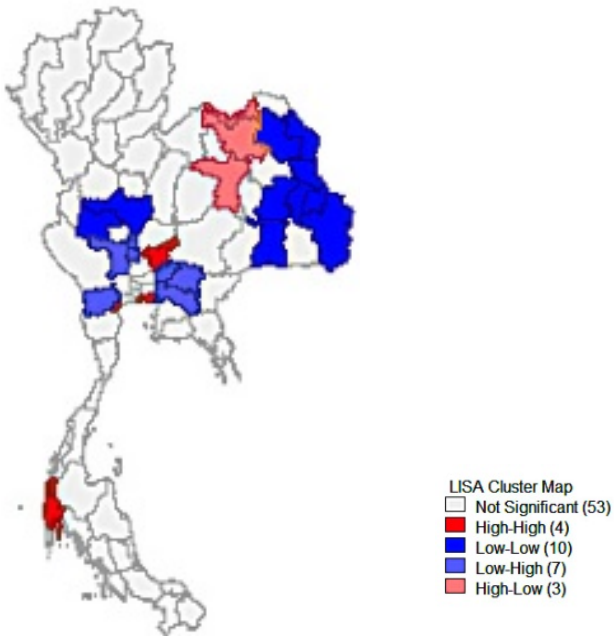
**Figure 5.** LISA (univariate) map of alcohol stores.



**Figure 6.** Significant (univariate) map of alcohol stores.

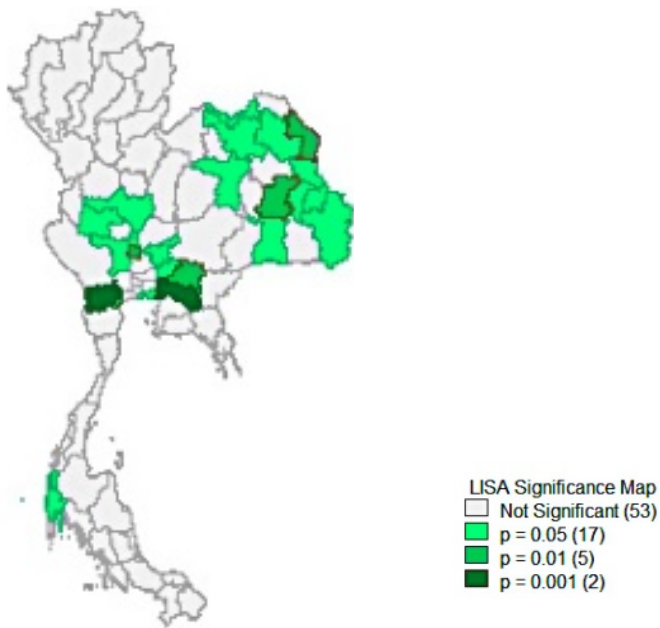


**Figure 7.** Moran's I scatter plot of food shop (convenience store, fast food outlet, café and bar).

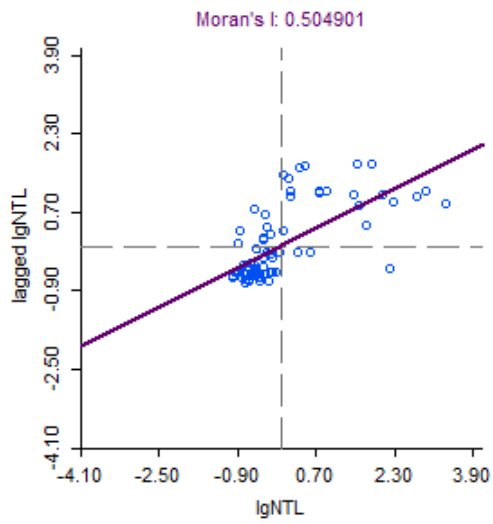


**Figure 8.** LISA (univariate) map of food shop (convenience store, fast food outlet, café and bar).

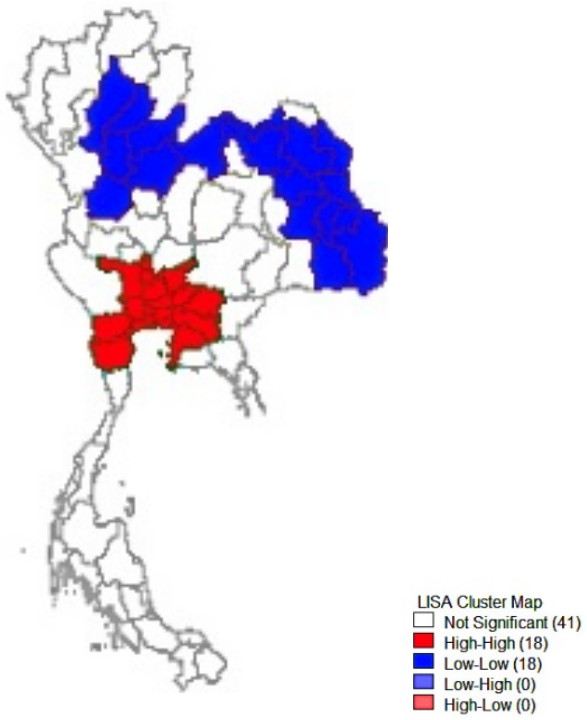




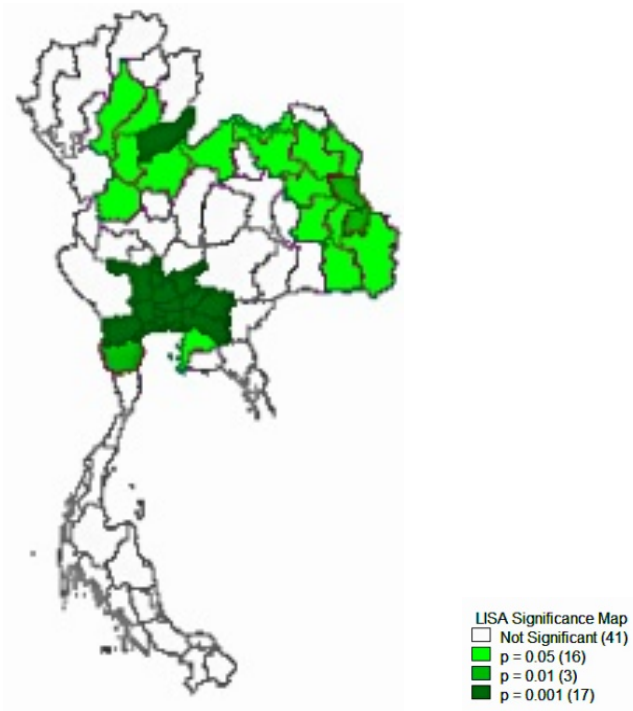
**Figure 9.** Significant (univariate) map food shop (convenience store, fast food outlet, café and bar).



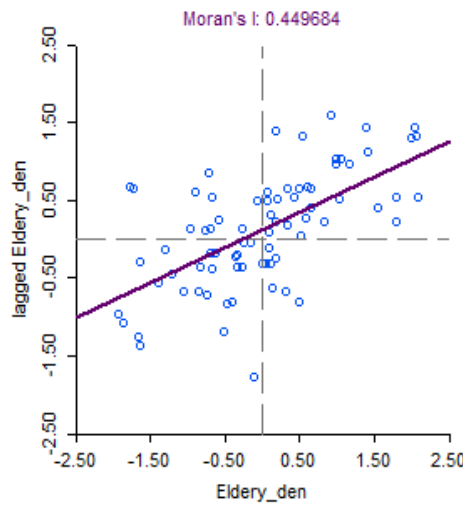
**Figure 10.** Moran's I scatter plot of NTL concentration.



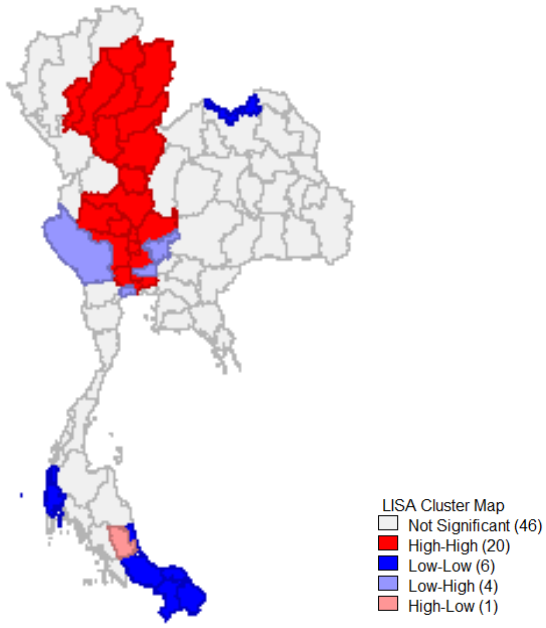
**Figure 11.** LISA (univariate) map of NTL concentration.



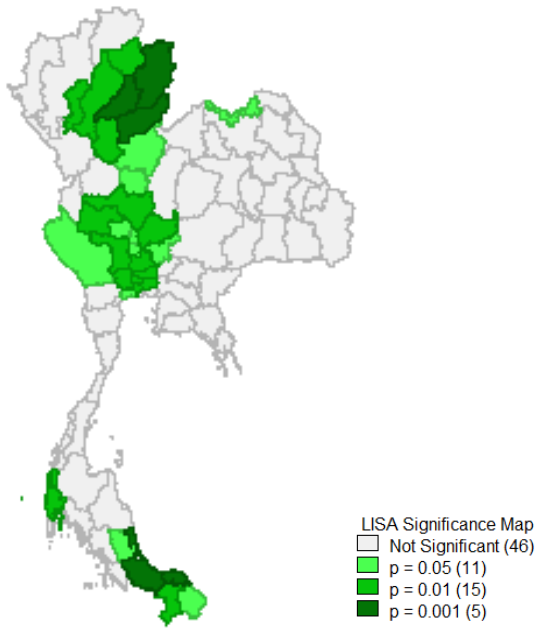
**Figure 12.** Significant (univariate) map of NTL concentration.



**Figure 13.** Moran's I scatter plot of concentration of elderly population.



**Figure 14.** LISA (univariate) map of concentration of elderly population.



**Figure 15.** Significant (univariate) map of concentration of elderly population.