

Appendix

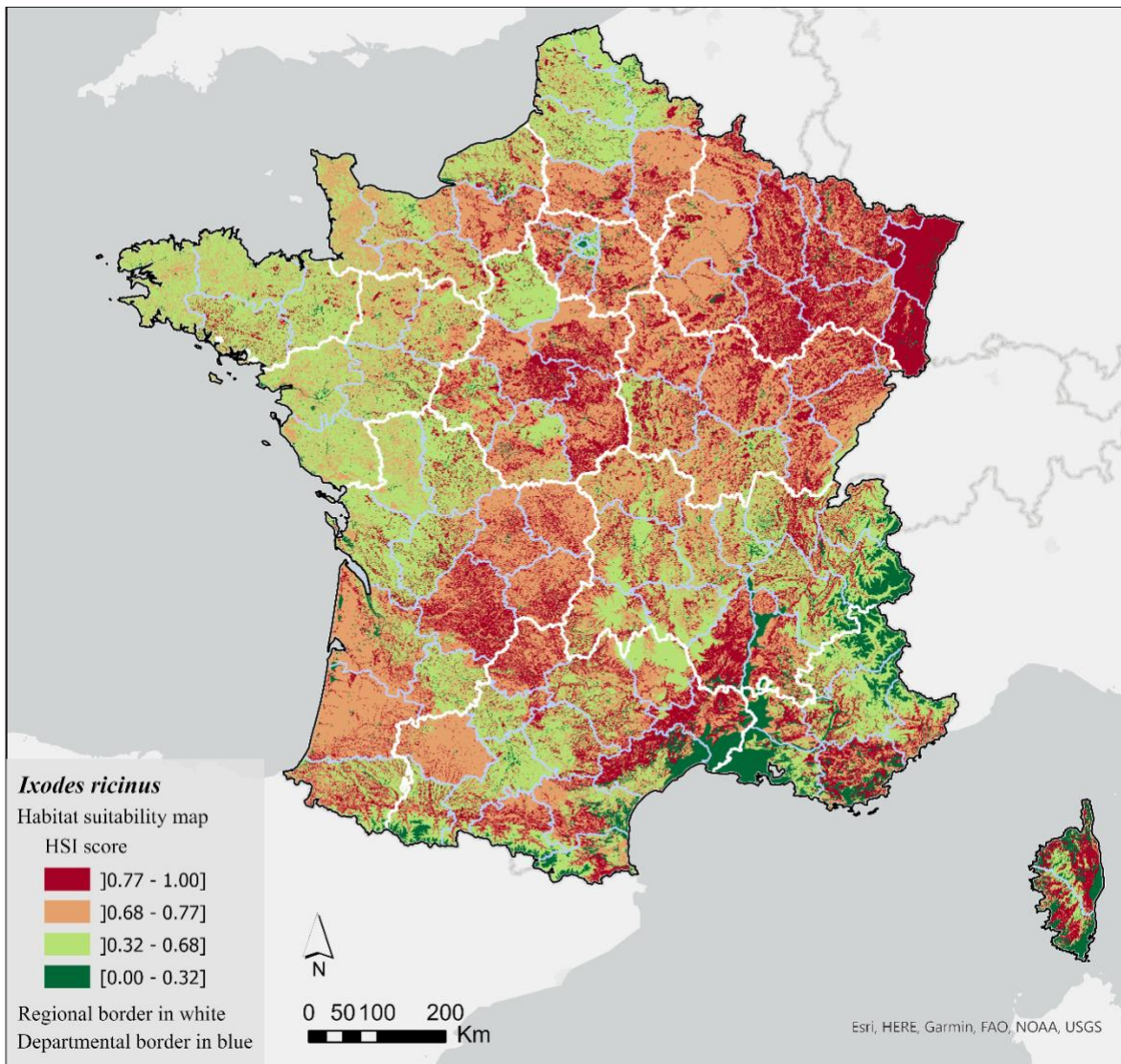


Figure S1. Map of habitat suitability scores for *I. ricinus* ticks in continental France and Corsica. Results based on the additive approach with departmental-level data for wild boar and roe deer (HSI_{dpt}^{add} see Table 6). Pixel resolution of 100x100 m. Threshold values obtained using Jenks natural breaks classification.

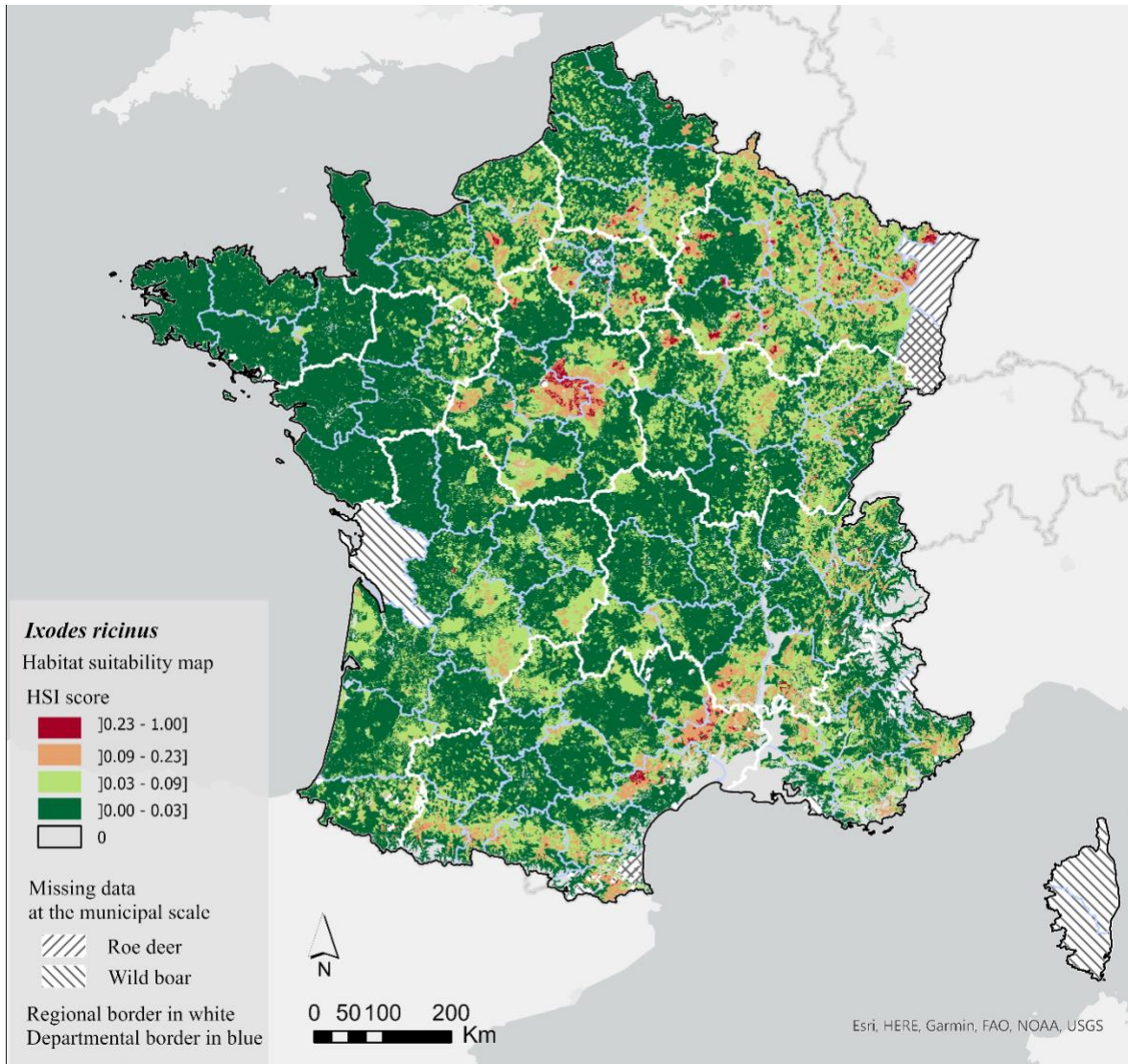


Figure S2. Map of habitat suitability score for *I. ricinus* ticks in continental France and Corsica. Results based on the multiplicative approach with municipal-level data for wild boar and roe deer (HSI_{dpt}^{add} see Table 6). Pixel resolution of 100x100 m. Threshold values obtained using Jenks natural breaks classification.

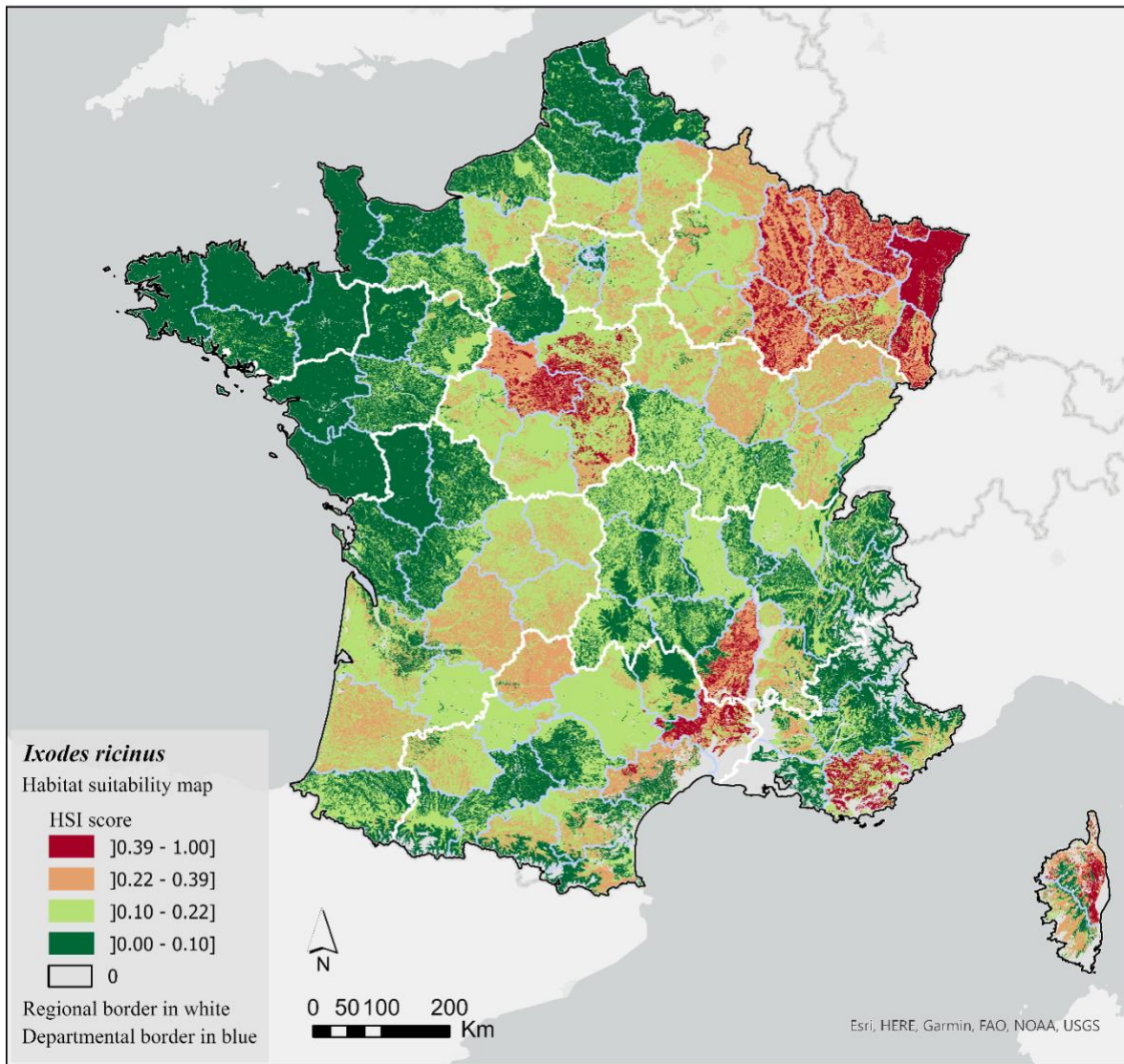


Figure S3. Map of Habitat Suitability scores for *I. ricinus* ticks in continental France and Corsica. Results based on the multiplicative approach with departmental-level data for wild boar and roe deer (HSI_{dpt}^{mx} see Table 6). Pixel resolution of 100x100 m. Threshold values obtained using Jenks natural breaks classification.