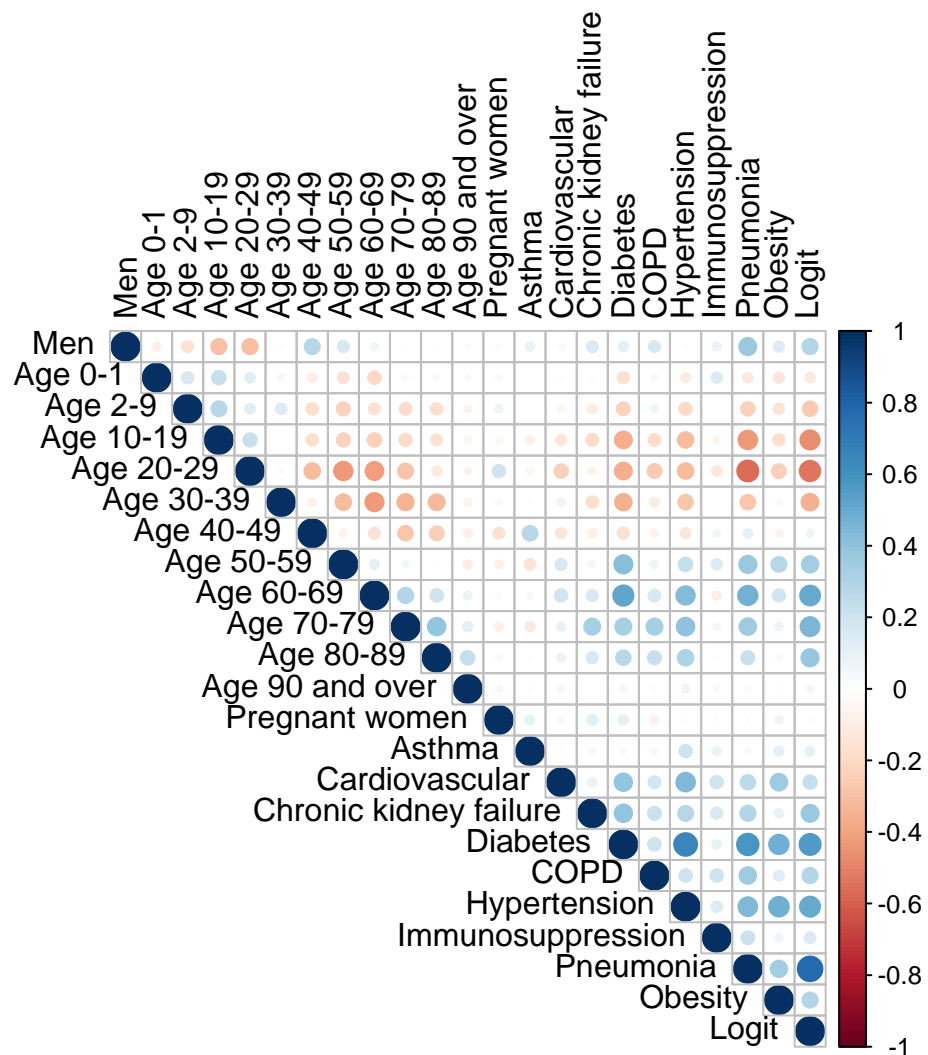


# Appendix

## 1. Results of descriptive space-time analysis

A gif with maps corresponding to weekly risks since January 2020 is available at the journal webpage.

## 2. Results of spatial panel linear models



**Figure S1. Association between inputs and between them and the output (transformed case-fatality risks): men (%), age group (%), pregnant women (%), and prevalence of the comorbidities.**

**Table S1. Neighbours for the 32 states of Mexico according to a Queen contiguity matrix.**

State ID	State Name	Neighbours
1	Aguascalientes	14, 32.
2	Baja California Norte	3, 26.
3	Baja California Sur	2.
4	Campeche	27, 31.
5	Coahuila de Zaragoza	8, 10, 19, 32.
6	Colima	14, 16.
7	Chiapas	20, 27, 30.
8	Chihuahua	5, 10, 25, 26.
9	Mexico City	15, 17.
10	Durango	5, 8, 18, 25, 32.
11	Guanajuato	14, 16, 22, 24, 32.
12	Guerrero	15, 16, 17, 20, 21.
13	Hidalgo	15, 21, 22, 24, 29, 30.
14	Jalisco	1, 6, 11, 16, 18, 32.
15	State of Mexico	9, 12, 13, 16, 17, 21, 22, 29.
16	Michoacán de Ocampo	6, 11, 12, 14, 15, 22.
17	Morelos	9, 12, 15, 21.
18	Nayarit	10, 14, 25, 32.
19	Nuevo León	5, 24, 28, 32.
20	Oaxaca	7, 12, 21, 30.
21	Puebla	12, 13, 15, 17, 20, 29, 30.
22	Querétaro	11, 13, 15, 16, 24.
23	Quintana Roo	31.
24	San Luis Potosí	11, 13, 19, 22, 28, 30, 32.
25	Sinaloa	8, 10, 18, 26.
26	Sonora	2, 8, 25.
27	Tabasco	4, 7, 30.
28	Tamaulipas	19, 24, 30.
29	Tlaxcala	13, 15, 21.
30	Veracruz de Ignacio de la Llave	7, 13, 20, 21, 24, 27, 28.
31	Yucatán	4, 23.
32	Zacatecas	1, 5, 10, 11, 14, 18, 19, 24.

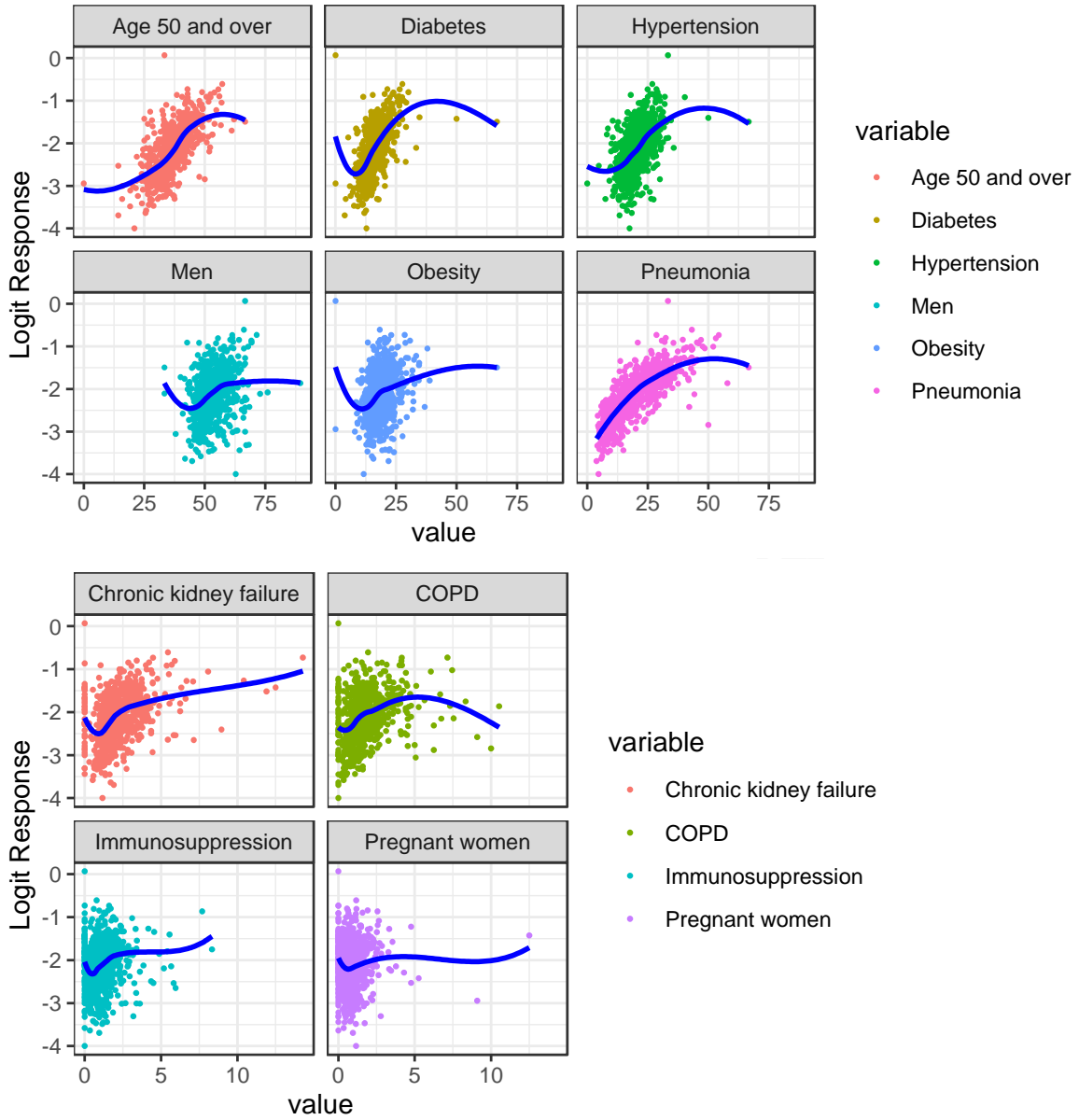
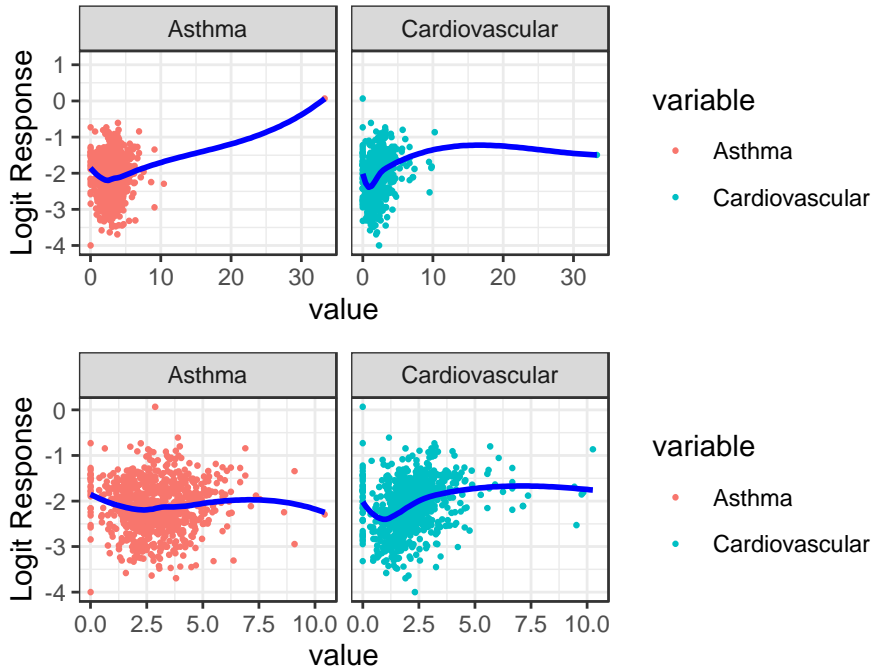
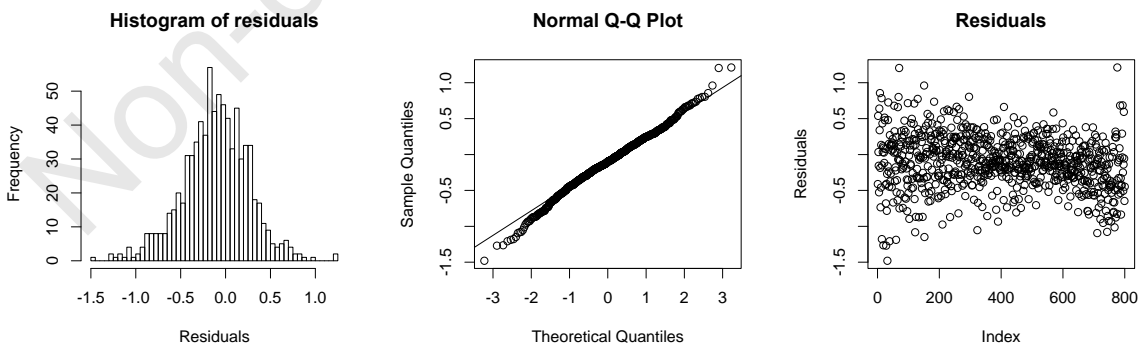


Figure S2. A) Results of the univariate analysis using LOESS for each variable.



**Figure S2. B) Results of the univariate analysis using LOESS for asthma and cardiovascular diseases, for which there are outliers, which were replaced by the mean.**



**Figure S3. Residuals of the fitted spatial linear model including as inputs percentage of men, people aged 50 years and over (%), prevalence of asthma, cardiovascular diseases, chronic kidney failure, diabetes, COPD, hypertension, immunosuppression, and obesity.**